

Hydrogear T2

Spare parts

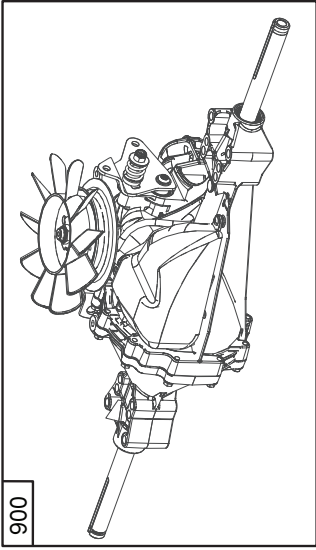
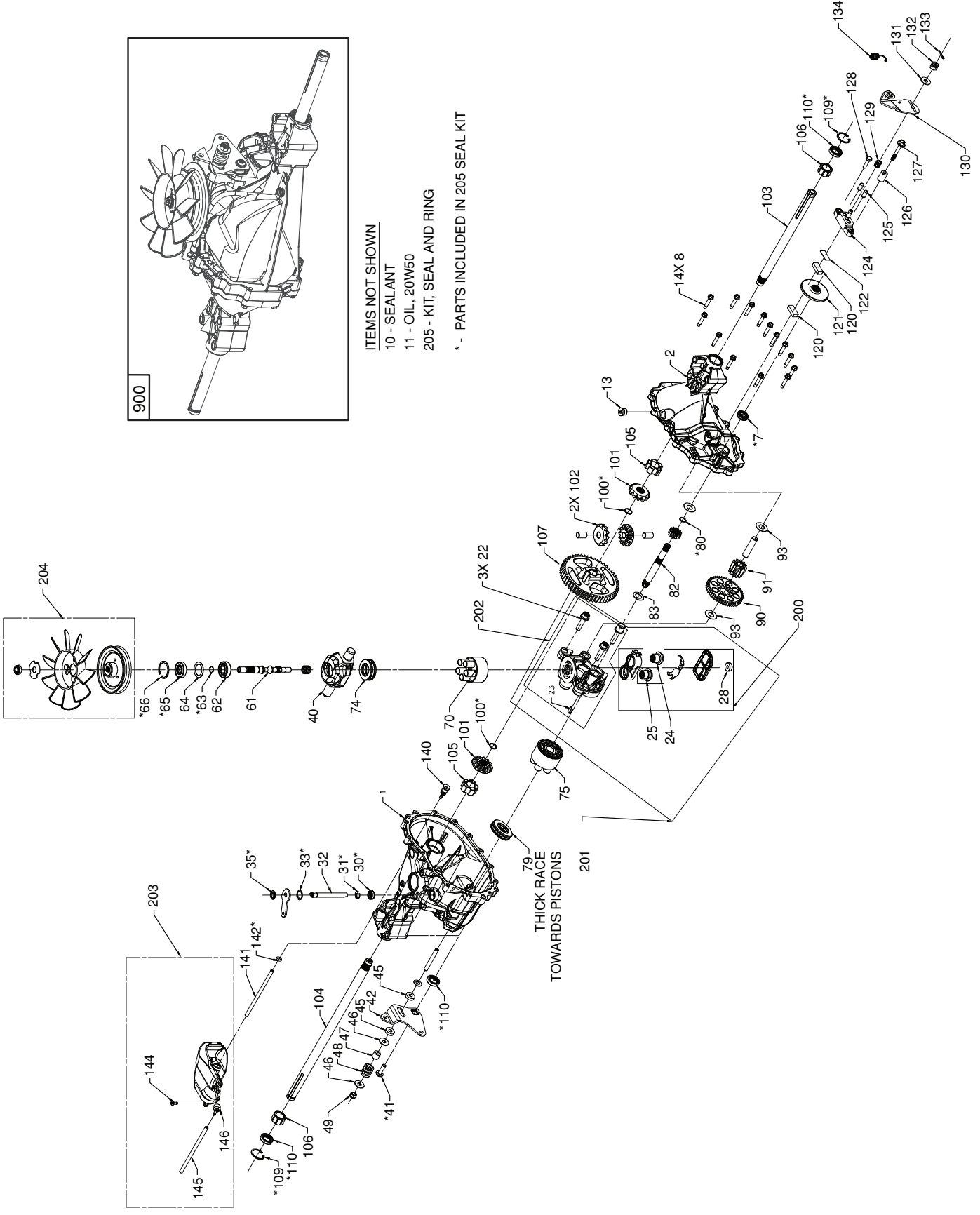
Ersatzteile

Pièces détachées

Reserve onderdelen

Repuestos

Reservdelar



900

ITEMS NOT SHOWN

- 10 - SEAL ANT
- 11 - OIL, 20W50
- 205 - KIT, SEAL AND RING

* - PARTS INCLUDED IN 205 SEAL KIT

KEY NO.	PART NO.	DESCRIPTION	KEY NO.	PART NO.	DESCRIPTION
1	532 41 20-15	Kit, Hsg, Main	93	532 17 04-18	Washer.51x1.10x.03
2	532 41 20-16	Kit, Hsg, Side	100	532 17 03-93	Ring, Ret - Spiral .625 Ext
7	532 42 29-87	Seal, Lip .50x1.0x.25 Tc	101	532 40 12-60	Gear, Bevel 12t Spllne Id
8	532 17 03-56	Hfhcs 1/4-20 X 1 .25"	102	532 40 12-61	Gear, Bevel 12t .50 Id
10	532 17 83-22	Sealant	103	532 17 03-91	Shaft, Axle, Keyed, 11.39 X 0.75
11	- - -	Oil, 20w50	104	532 17 03-92	Shaft. Axle, Keyed, 16.99 X 0.75
13	532 17 04-34	Plug 9/16-18 (Metal)	105	532 41 20-52	Bushing, Inboard
22	532 41 20-22	Bolt, Hex Flange. 3/8-16, C/S	106	532 41 20-53	Bushing, Outboard
23	532 41 20-23	Plate, Bypass	107	532 41 20-54	Gear Wheel, 53T
24	532 17 04-20	Assembly, Check Plug W/ Washer. ,027	109	532 41 20-56	Ring, Ret, Int Axle
25	532 41 20-24	Assembly, Check Plug W/ Washer, 027, Spring	110	532 14 29-61	Seal, Lip.75x1.125x.25 Tc
28	532 17 03-95	Ring, Magnet	120	532 14 28-83	Puck, Brake
30	532 41 20-28	Seal, Lip.375x.75x.25 Tc	121	532 41 20-57	Rotor, Brake
31	532 41 20-29	Ring, Ret .375 Ext	122	532 14 28-82	Plate, Puck
32	532 41 20-30	RoD, Actuator Bypass	124	532 14 29-29	Yoke, Brake
33	532 41 20-31	Ring, Ret .750 Int	125	532 14 28-87	Pin. Brk .31x.73 Plated
35	532 41 20-33	Ring, Ret .375 Ext	126	532 16 11-74	Spacer .26x.57x.87
40	532 41 20-34	Trunnion. Swash Plate	127	532 17 04-10	Hfhcs 1/4-20 X 2.0 W/Patch
41	532 41 20-35	Screw 5/16-18x1	128	532 14 28-92	Hhcs 1/4-20x1 (Patch)
42	532 41 20-36	Arm, Cntrl	129	532 16 11-81	Spring. Comp Brake Anti-Drag
45	532 41 20-39	Washer,Plastic, .32x.80x.21	130	532 14 29-54	Arm, Brake
46	532 14 28-84	Washer .34x.88x.06	131	532 14 28-84	Washer .34x.88x.06
47	532 14 29-80	Spacer .32x.59x.50	132	532 14 28-85	Nut, Castle 5/16-24 PI
48	532 14 29-69	Spring, Helical Comp	133	532 14 28-86	Pin, Cotter 3/32x3/4
49	532 15 07-78	Nut, Hex 5/16-24 Nylon Lnsert	134	532 18 93-86	Spring, Brake Arm Bias
61	532 41 20-40	Shaft, Lnput	140	532 17 04-25	5/16 Sae, 5/32 Tube
62	532 14 29-34	Ball Bear L Ng 15x35x 1 1	141	532 41 20-58	Hose
63	532 14 29-28	Ring, Ret Wire .512 Id	142	532 17 04-35	O-Ring .103x.299 Id
64	532 16 11-25	Washer 1.23x1.56x.04	144*	532 42 29-88	Bolt, Self-Tapping 10-32x1/2
65	532 14 29-32	Seal, Lip 15x35x7	145	532 41 20-58	Hose
66	532 14 29-33	Ring, Ret 1.56 Int	146	532 40 12-64	Cap, Barbed Vent
70	532 41 20-42	Kit, Block, Cyl 8cc	200	532 41 20-62	Kit, Filter
74	532 41 20-43	Brg, Thrust Ball 27x47x14	201	532 41 20-63	Kit, Center Section W/Filter
75	532 16 98-98	Kit, Block, Cyl 10cc Rm	202	532 41 20-64	Kit, Center Section
79	532 15 07-71	Brg, Thrust Ball 30x52x13	203	532 41 20-65	Kit, Tank Expansion
80	532 41 20-44	Ring, Ret .50 Ext	204	532 41 20-66	Kit, Fan & Pulley
82	532 41 20-46	Shaft, Motor	205	532 41 20-67	Kit, Seal
90	532 41 20-48	Gear Wheel, 11T-48T	900	532 41 82-19	Transaxle Assembly-Complete
91	532 41 20-49	Gear Wheel, 11T			

NOTE: All component dimensions given in U.S. inches
1 inch = 25.4 mm

NOTE: These spare parts also service 408799 (Hydrogear T2-AABC-1X1A-1GXX) transaxle assembly.

* Key No. 144 replaces previous parts 161175 self-tapping bolt 10-32x1/2 and 412060 ratchet fastener.