

Hydro-Gear Transaxle 331-3000

Spare parts

Ersatzteile

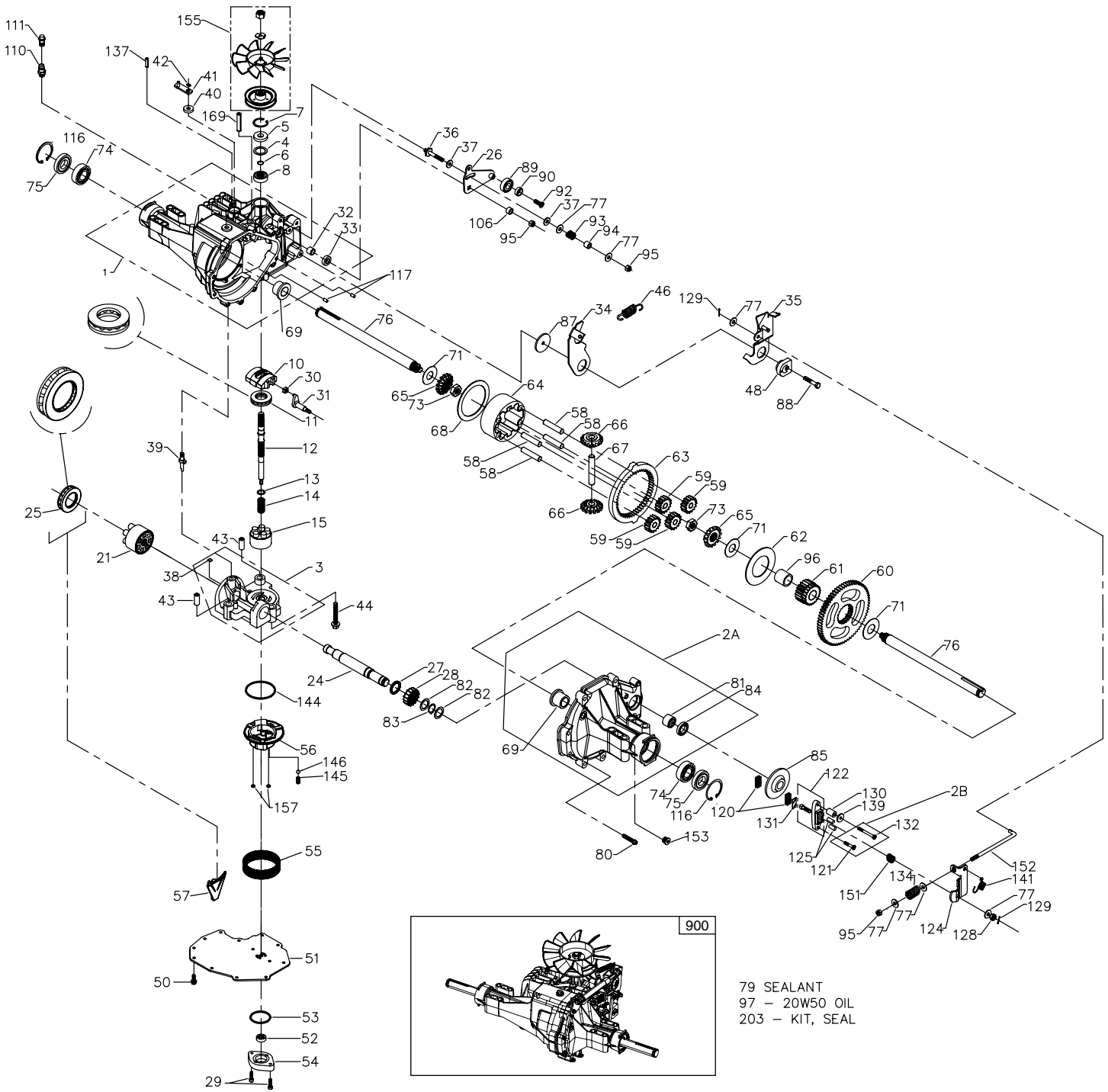
Pièces détachées

Reserve onderdelen

Repuestos

Reservdelar

HYDRO-GEAR TRANSAXLE - - MODEL NUMBER 331-3000



HYDRO-GEAR TRANSAXLE - - MODEL NUMBER 331-3000

KEY PART NO. NO.	DESCRIPTION	KEY PART NO. NO.	DESCRIPTION	
1	532 16 11-22	Kit, Housing, Main (Main Housing; Lip Seal; Flange Bearing; Trunnion Bushing; Cradle Bearing)	68 532 16 11-53	Plate, Differential Thrust (310-3000)
2	532 17 83-17	Kit, Housing, R.H. (R.H. Housing; Flange Bearing; O-Ring; 2" Rib Neck Bolt; 3" Rib Neck Bolt; Needle Bearing [SCE1412]; Lip Seal [.875 I.D. x L.3 O.D. x .25])	69 532 16 95-34	Bearing, Flange (310-3000)
3	532 18 47-03	Kit, Center Section (Center Section; .50 x .60 x .50 Bushing; .90 x L.02 x .75 Bushing; Bypass Plate; Check Plug Assembly [.044]; Check Plug Assembly [No Bleed])	71 532 16 11-55	Washer, Flat (1.00 I.D.) (310-3000)
4	532 16 11-25	Spacer (BDP, BDU 10)	73 532 16 11-56	Nut, Hex, Jam, 5/8-18 (310-3000)
5	532 14 29-32	Seal, Lip	74 532 16 95-35	Bearing, Ball (310-3000)
6	532 14 29-28	Retaining Ring	75 532 16 11-57	Seal, Lip (310-3000)
7	532 14 29-33	Retaining Ring	76 532 16 11-58	Shaft, Axle (310-3000)
8	532 14 29-34	Bearing, Ball	77 532 14 28-84	Washer, Flat
10	532 16 95-24	Swash Plate (BDP, BDU 10)	79 532 17 83-22	Sealant Tube
11	532 17 31-59	Bearing, Thrust (10cc)	80 532 16 11-59	Screw, Torx Head 5/16-18 (310-3000)
12	532 16 11-26	Shaft, Input (310-3000)	81 532 16 11-60	Bearing, Needle (210-3000)
13	532 14 29-78	Washer, Block Thrust	82 532 16 11-61	Washer, Flat (0.880 ID) (310-3000)
14	532 14 29-77	Spring, Helical Compression	83 532 16 11-62	Ring, Retaining (310-3000)
15	532 16 98-98	Kit, Cylinder Block, 10cc (Cylinder Block; Piston; Piston Spring; Piston Seat Washer)	84 532 16 11-63	Seal, Lip (.875 ID x 1.38 OD x .25) (310-3000)
21	532 15 07-86	Block, BD-21& IHT, 21cc (Cylinder Block; Piston Seat Washer; Piston; Piston Spring)	85 532 16 11-64	Brake Disc (310-3000)
24	532 16 11-27	Shaft, Motor (310-3000)	87 532 17 83-23	Washer (310-3000)
25	532 16 95-26	Bearing, Thrust (21cc)	88 532 17 87-84	Screw, Socket Head, Cap 5/16-24 x 1-1/2 (310-3000)
26	532 16 11-28	Control Arm (310-3000)	89 532 17 87-83	Bearing, Ball
27	532 16 11-29	Spacer (310-3000)	90 532 17 83-26	Spacer, Locating (310-3000)
28	532 16 11-30	Gear, 16 Teeth, Pinion	92 532 17 87-87	Screw (310-3000)
29	532 16 95-27	Screw, Cap	93 532 14 29-69	Spring
30	532 14 29-41	Guide Block (BD-21)	94 532 14 29-80	Spacer
31	532 16 98-87	Trunnion, Tapered Square	95 532 16 95-37	Locknut, Hex, Nylon Insert 5/16-24
32	532 16 11-33	Bearing, Journal	96 532 16 95-38	Bearing, Sleeve (310-3000)
33	532 14 29-40	Seal, Lip	97 - - -	20W-50 Oil, 122 Oz
34	532 17 83-18	Return Arm (310-3000)	106 532 1611-66	Spacer, Trunnion (310-3000)
35	532 17 83-19	Actuating Arm (310-3000)	108 532 1508-00	Plug, Plastic, Shipping
36	532 17 04-21	Bolt, Stud 5/16-24	110 532 1508-13	O-Ring (Includes Plastic Hose Fitting)
37	532 14 29-67	Friction Puck	111 532 1508-12	Plastic Breather Vent (Includes Cap)
38	532 18 46-94	Kit, Bypass Plate	116 532 16 95-39	Ring, Retaining (310-3000)
39	532 16 95-29	Bypass Actuator (IHT)	117 532 16 11-68	Pin
40	532 14 29-45	Seal, Lip	120 532 14 28-83	Brake Puck
41	532 14 29-52	Bypass Arm	121 532 16 95-40	Bolt, 2" Rib Neck (310-3000)
42	532 14 29-53	Retaining Ring	122 532 17 83-29	Kit, Brake Yoke
43	532 14 29-65	Pin	124 532 17 83-30	Brake Arm
44	532 15 07-97	Bolt 3/8-24 x 2-1/2	125 532 17 04-09	Pin, Brake Actuating
46	532 18 47-02	Spring, Neutral (310-3000)	126 532 16 11-72	Washer, Lock 1/4
48	532 17 83-20	Puck, Adjusting (310-3000)	127 532 16 11-73	Nut, Hex 1/4-20
50	532 17 83-43	Screw, Cap (IZT) 1/4-20 x 3/4	128 532 17 04-15	Nut, Castle 5/16-24
51	532 16 95-30	Lower Cover	129 532 17 04-16	Pin, Cotter 3/32 x 3/4
52	532 16 95-31	Geroter Assembly	130 532 17 04-11	Spacer, Brake Torsion Spring
53	532 14 45-81	O-Ring	131 532 14 28-82	Brake Puck Plate
54	532 16 11-39	Charge Pump Housing	132 532 16 95-44	Bolt, 3" Rib Neck (310-3000)
55	532 17 83-21	Kit, Filter (Filter; Gasket .10 x .16 x 4.24)	134 532 17 83-31	Brake Comp. Spring
56	532 16 95-33	Charge Manifold 310-3000	137 532 17 83-33	Pin, Spring (310-3000)
57	532 16 11-42	Retainer, Motor Bearing (310-3000)	139 532 16 11-76	Washer, Flat
58	532 16 11-43	Pin, Carrier (310-3000)	141 532 17 83-35	Spring, Brake Arm Bias
59	532 16 11-44	Gear, 15 Teeth, Planet (310-3000)	144 532 16 95-45	O-Ring
60	532 16 11-45	Gear, 67 Teeth, Spur (310-3000)	145 532 16 95-46	Spring, Relief
61	532 16 11-46	Gear, 21 Teeth, Sun (310-3000)	146 532 16 95-47	Steel Ball 7/16
62	532 16 11-47	Plate, Planet Thrust (310-3000)	151 532 17 04-17	Brake Spring
63	532 16 11-48	Gear, 51 Teeth, Ring (310-3000)	152 532 17 83-36	Brake Pull Rod
64	532 16 11-49	Carrier, Planetary (310-3000)	153 532 17 04-34	Plug, Straight Thread 9/16-18
65	532 16 11-50	Gear, Differential Bevel (310-3000)	155 532 17 83-37	Kit, Fan/Pulley (Fan; Pulley; 1/2 x 20 Jam Nut; .53 x 1.63 x .06 Slotted O.D. Washer)
66	532 16 11-51	Gear, Differential Bevel Pinion (310-3000)	157 532 16 95-48	O-Ring
67	532 16 11-52	Shaft, Differential (310-3000)	169 532 18 47-01	Pin, Spring 5/16 x 1.75
			203 532 17 83-38	Kit, Seal (10 x 25 x 7, 12 x 25 x 7, 15 x 5 x 37 and .875 ID x L.3 OD x .25 Lip Seals; 25 x 52 x 10 Seal; .103 x 1.862 and .070 x .239 O-rings; 5/16 x 1.75 and 1/4 x 1.00 Spring Pins; Manifold O-Ring Kit)
			900 532 1760-56	Transaxle

NOTE: All component dimensions given in U.S. inches.
1 Inch = 25.4 mm