

T560 RS

Spare parts

Ersatzteile

Pièces détachées

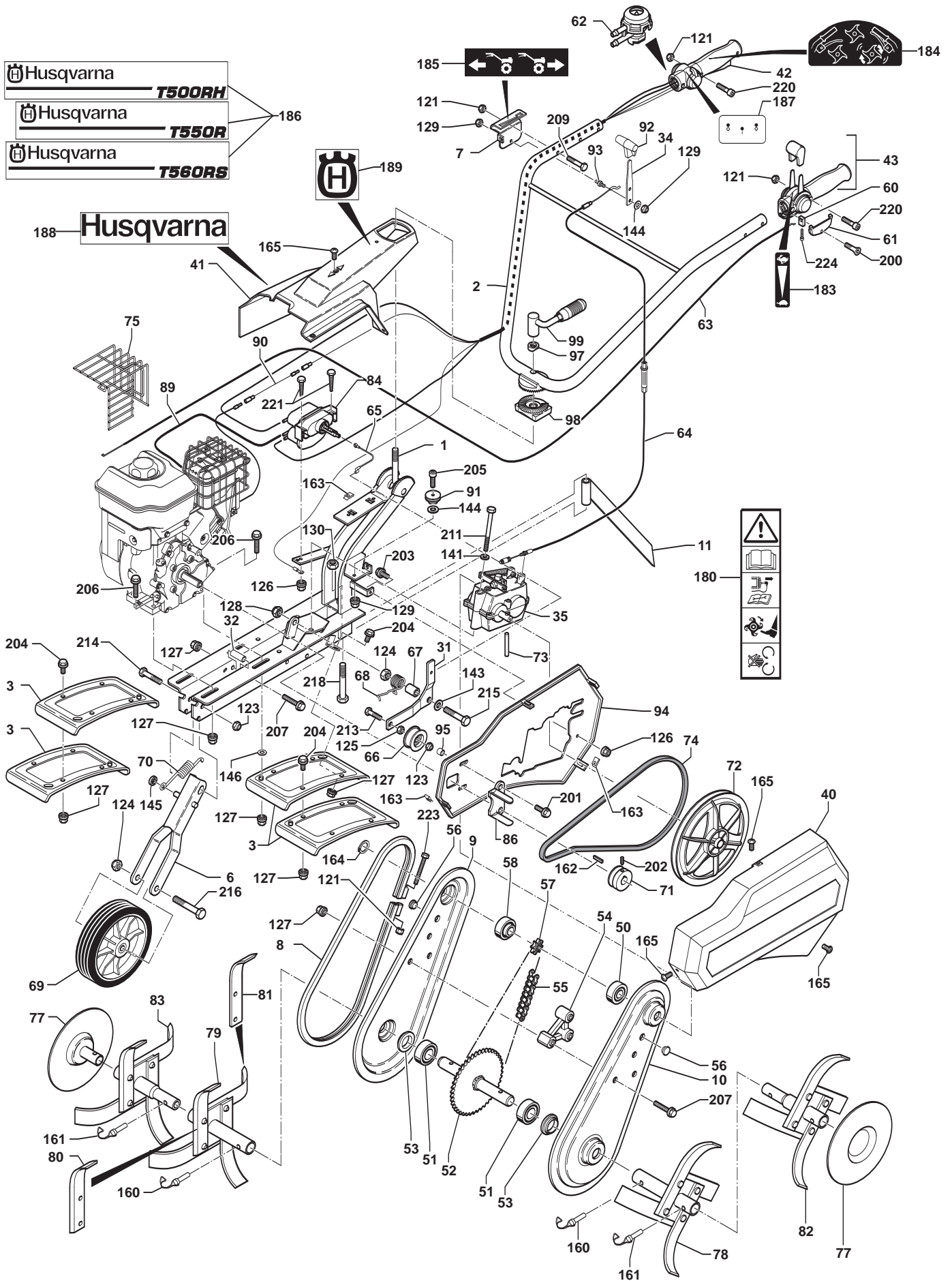
Reserve onderdelen

Repuestos

Reservdelar

REPAIR PARTS

TILLER - MODEL NO. T 500RH, T550R, T 560RS PRODUCT NO. 106 23 12-82



REPAIR PARTS

TILLER - MODEL NO. T 500RH, T550R, T 560RS PRODUCT NO. 106 23 12-82

Rep N°	Réf./Ref.			Description	Désignation	Qté / Qty		
						T500RH	T550R	T560RS
	519 65 30-81	3001000010	57720500	Complete casing, flanged Orange	Carter complet à jonc orange			
1	531 00 85-81	3002040601	57728101	Chassis Grey H	Châssis Gris H	1	1	1
2	531 00 82-41	3002000604	57723103	Handlebars Grey H	Guidon Gris H	1	1	1
3	519 65 02-81	3502010601	57001022	Protective cover Grey H	Tôle protection Gris H	6	6	6
6	519 65 34-60	3002000308	12601005	Front wheel bracket	Supp. roue transport Noir	1	1	1
7	531 00 85-17	3002000311	11703105	Gear lever cover, RHS	Tôle levier vitesse droite	1	1	1
8	519 65 30-43	3002002401	12711035	Flange Orange	Jonc orange	1	1	1
9	519 65 30-41	3002000312	11301130	Transmission housing, RHS	Joue carter eco droite	1	1	1
10	519 65 30-42	3002000313	11301131	Transmission housing, LHS	Joue carter eco gauche	1	1	1
11	531 00 82-06	3002000302	12611011	Key	Éperon	1	1	1
31	519 65 34-07	3002000104	11701140	Clutch lever	Levier embrayage	1	1	1
32	519 65 34-24	0302020015	11301145	Spacer	Entretoise Châssis	1	1	1
34	531 00 85-19	0304000044	36079a	Gear lever	Manette de vitesse	1	1	1
35	519 65 30-92	0306040001	57720996	Reversing gearbox	Réducteur Mar mécanique	1	1	1
40	519 65 34-23	0340010013	65037	Belt cowl Orange	Capot courroie orange	1	1	1
41	531 00 82-25	0340010012	65077a	Handle cowl BS5,5hp/GC	Capot mancheron BS5,5hp/GC	1	1	1
42	531 00 82-43	0340010042	14310	Right handle - pneumatic and electrical controls (Orange)	Poignée droite cde pneum. + faisceau (Orange)	1	1	1
43	531 00 82-44	0340010043	14311	Left handle - gas control (Orange)	Poignée gauche cde de gaz (Orange)	1	1	1
50	505 54 40-01	0306010024		Ball-race	Roulement	1	1	1
51	519 65 30-53	0306010020	12542	Ball-race	Roulement	2	2	2
52	519 65 30-07	0306050010	15038	Blade shaft	Arbre de travail	1	1	1
53	531 00 85-76	0341000027	46098	Joint	joint de carter	2	2	2
54	519 65 30-06	0341000001	14088	Spacer	Entretoise plastique	1	1	1
55	519 65 30-09	0306020005	13292	Chain	Chaîne	1	1	1
56	519 65 33-91	0341000014	12793	Grease cap	Bouchon	2	2	2
57	519 65 30-57	0306050016	13372	Cogwheel	Pignon 8 dts	1	1	1
58	531 00 85-46	0306010016	12551	Shouldered Ball-race	Roulement épaulé	1	1	1
60	531 00 82-46	0340010047	14313	Gas lever sleeve stop	Arrêt de gaine manette de gaz	1	1	1
61	531 00 82-47	0340010046	14312	Gas lever access panel	Trappe d'accès manette de gaz	1	1	1
62	531 00 82-48	0001000536	14315	Clutch handle microvalve	Microvanne poignée embrayage	1	1	1
63	531 00 85-83	0308040016	13840a	Throttle cable (B.S 5,5hp)	Câble gaz (B.S 5,5hp)	1		
	531 00 85-84	0308040011	13825b	Throttle cable (GC 135-160)	Câble gaz (GC 135-160)		1	
	531 00 85-85	0308040009	13841a	Throttle cable (Robin EX 13-17)	Câble gaz (Robin EX 13-17)			1
64	519 65 30-55	0308010002	13192	Reverse gear cable	Câble inversion vitesse	1	1	1
65	519 65 34-09	0308020002	13206	Clutch cable	Câble embrayage	1	1	1
66	519 65 34-57	0341000003	12162	Runner	Galet embrayage	1	1	1
67	519 65 34-51	0302020019	16034	Spacer	Entretoise levier embrayage	1	1	1
68	519 65 30-90	0305020005	65133	Spring	Ressort embrayage	1	1	1
69	519 65 30-00	0309000013	14090	Front wheel	Roue avant	1	1	1
70	519 65 02-60	0305010002	65026	Spring	Ressort roue transport	1	1	1
71	531 00 82-29	0306060005	15415	Motor pulley Forward/Reverse gear (Shaft Ø19,05)	Poulie moteur Mav-Marr arbre Ø19,05	1	1	1
72	519 65 30-60	0341000007	14135	Transmission pulley	Poulie transmission	1	1	1
73	519 65 30-67	0302010021	15098	Pulley shaft	Axe fixation poulie	1	1	1
74	519 65 30-58	0306030002	13567	Forward drive belt	Courroie Mav-Marr	1	1	1
75	531 00 85-82	0330032001	19020	Exhaust grill (Robin EX 13-17)	Grille échappement (Robin EX 13-17)	1	1	1
77	519 65 33-62	0320010001	55102	Disk	Disque	2	2	2
78	531 00 85-20	0320010005	55128	Simple rotating blades 40x4 L	Étoile départ simple 40x4 G	1	1	1
79	531 00 85-21	0320010006	55129	Simple rotating blades 40x4 R	Étoile départ simple 40x4 D	1	1	1
80	531 00 85-47	0001000030	81918	Blade, LH	Couteau gauche			
81	531 00 85-48	0001000029	81917	Blade, RH	Couteau droit			
82	531 00 85-22	0320010008	55124	Additional blade assembly, LH	Étoile addit. dém. gauche			
83	531 00 85-23	0320010007	55123	Additional blade assembly, RH	Étoile addit. dém. droite			
84	531 00 82-49	0340010048	14314	Control cylinder	Vérin double cuve	1	1	1
86	531 00 85-77	0304000035	36189	Drive-belt guide Forward/Reverse gear	Guide courroie Mav-Marr	1	1	1
89	519 65 34-16	0341000043	14215a	Vacuum tube, motor GC	Tube connection moteur GC	1		
	531 00 82-50	0341000042	14320	Vacuum tube, motor BS5,5hp / EX 17	Tube connection moteur BS5,5hp / EX 17		1	1
90	531 00 82-33	0308060004	13213	Engine cut-of wire GC	Fill arrêt moteur GC	1		
91	519 65 30-52	0341000005	12169a	Runner	Galet Câble embrayage	1	1	1
92	519 65 30-91	0341000021	68364	End tube	Embout manette vitesse	1	1	1
93	531 00 85-18	0302010024	15126	Lever spindle	Axe levier 2 vitesses	1	1	1
94	531 00 82-35	0340010003	14302b	Inner casing shell	Cache intérieur	1	1	1
95	531 00 82-16	0302020010	16037	Spacer BS5,5	Entretoise cache intérieur BS5,5		2	
	531 00 82-36	0302020012	16039	Spacer GC - EX 13/17	Entr. cache int. GC - EX 13/17	2		2
97	519 65 34-14	0302020037	16023	Spacer	Entretoise poignée de serrage	1	1	1
98	519 65 34-15	0303000007	36006c	Filler piece	Pièce intermédiaire	1	1	1
99	531 00 82-37	0300801401	15431	Handlebar tightening lever	Poignée de serrage	1	1	1
121	732 26 16-01	0300210602	11482	Blocking nut M6 Z	Écrou frein M6 Z			
123	519 65 34-58	0300211001	11485	Blocking nut M10 Z	Écrou frein M10 Z			
124	725 25 50-51	0300211201	11486	Blocking nut M12 Z	Écrou frein M12 Z			
125	519 65 34-56	0300201002	11429	Nut HM10 Z	Écrou H M10 Z			
126	519 65 34-32	0300260601	11518	Nut HM6 Z, notched shoulder	Écrou H M6 Z embase crantée			
127	519 65 34-30	0300260801	11519	Nut HM8 Z, notched shoulder	Écrou H M8 Z embase crantée			
128	531 00 82-21	0300251202	11521	Nut HM12 Z, notched shoulder	Écrou H M12 Z embase crantée			
129	519 65 34-11	0300210601	11493	Nut BDR M6 Z	Écrou BDR M6			
130	531 00 85-78	0300211402	11487	Blocking nut M14 Z	Écrou frein M14 Z			
141	519 65 34-50	0300400802	11616	Washer 8 Z	Rondelle 8 Z			
143	519 65 34-53	0300401201	11635	Washer 12x27x2,5 Z	Rondelle 12x27x2,5			
144	519 65 34-49	0300400602	11614	Washer 6x14x1	Rondelle 6x14x1			
145	519 65 34-62	0300461001	11818	Starlock washer 10	Rondelle starlock 10			
146	519 65 30-97	0300410901	11619	Washer 9x20x3 Z	Rondelle 9x20x3 Z			

REPAIR PARTS

TILLER - MODEL NO. T 500RH, T550R, T 560RS PRODUCT NO. 106 23 12-82

Rep N°	Réf./Ref.			Description	Désignation	Qté / Qty		
						T500RH	T550R	T560RS
160	531 00 94-10	0301010011	55078	Clip pin, 10mm diameter	Goupille clips Ø10			
161	531 00 94-11	0301010010	55079	Clip pin, 8mm diameter	Goupille clips Ø8			
162	519 65 30-21	0301040001	12979	Key (Shaft Ø19,05)	Clavette arbre Ø19,05			
163	519 65 34-25	0301050001	11495	Spire nuts 4,2	Clips 4,2			
164	519 65 34-66	0301070001	12855	Circlips	Circlips			
165	519 65 34-26	0300080405	11135	Cover bolt 4,2	Vis Tôle 4,2			
180	531 00 85-40	0503000036	21240	Safety label	Étiq. "Sécurité"			
183	531 00 82-51	0503000043	64673	Label: Accelerator lever	Étiquette de gaz			
184	519 65 30-85	0503000029	62831	Label: Clutch lever	Étiquette embrayage mécanique			
185	519 65 30-84	0503000032	62830	Label: Forward and reverse gears	Étiq. "inversion de vitesse "			
186	531 00 82-60	0503010007	65089a	Label: Husqvarna T500RH	Étiq: Husqvarna T500RH	1		
	531 00 82-61	0503010009	65083	Label: Husqvarna T560RS	Étiq: Husqvarna T560RS			1
	531 00 85-14	0503010008	65087	Label: Husqvarna T550R	Étiq: Husqvarna T550R		1	
187	519 65 31-03	0503000015	14678	On/off label	Étiq. "Marche - Arrêt"			
188	525 88 07-01	0503010013	62825b	Label: Husqvarna	Étiq: Husqvarna	1	1	1
189	531 00 82-63	0503010012	62823a	Label: H	Étiq: H	1	1	1
200	531 00 82-52	0300090302	11501	Screw thermo 3,5x12	Vis thermo 3,5x12			
201	519 65 34-12	0300060503	11116	Screw 5/16 TH24 UNF lg 25, notched shoulder (B.S 5,5hp)	Vis 5/16 TH24 UNF lg 25 emb crantée (B.S 5,5hp)			
	531 00 85-86	0300060502	11117	Screw 5/16 TH24 UNF lg 32, notched shoulder (GC/EX)	Vis 5/16 TH24 UNF lg32 emb crantée (GC/EX)			
202	519 65 30-20	0300040801	11085	Screw St Hc M8x16 N	Vis St Hc M8x16 N			
203	519 65 34-35	0300010609	11250	Screw H M6x16 Z, notched shoulder	Vis H M6x16 Z embase crantée			
204	531 00 82-02	0300010815	11260	Screw H M8x16 Z, notched shoulder	Vis H M8x16 Z embase crantée			
205	531 00 82-53	0300010610	11251	Screw H M6x20 Z, notched shoulder	Vis H M6x20 Z embase crantée			
206	519 65 34-13	0300010817	11265	Screw H M8x40 Z, notched shoulder motor BS/GC	Vis H M8x40 Z embase crantée shouder BS/GC			
207	519 65 34-63	0300010820	11267	Screw H M8x50 Z, notched shoulder	Vis H M8x50 Z embase crantée			
209	519 65 34-37	0300010604	10752	Screw H M6x35 Z	Vis H M6x35 Z			
211	519 65 30-45	0300010804	10794	Screw H M8x110 Z	Vis H M8x110 Z			
213	519 65 34-55	0300011003	10810	Screw H M10x35 Z	Vis H M10x35 Z			
214	519 65 30-46	0300011007	10834	Screw H M10x55 Z	Vis H M10x55 Z			
215	519 65 34-54	0300011207	10859	Screw H M12x60 Z	Vis H M12x60 Z			
216	519 65 31-31	0300011206	10863	Screw H M12x80 Z	Vis H M12x80 Z			
218	531 00 82-20	0300011401	10899	Screw H M14x90 Z	Vis H M14x90 Z			
220	519 65 30-26	0300020604	11059	Screw CHc M6x35	Vis CHc M6x35			
221	531 00 82-55	0300090601	11376	Self-tapping screw H M6x40	Vis H M6x40 autotaraudeuse			
223	519 65 30-10	0300020605	11061	Screw CHc M6x50	Vis CHc M6x50			
224	531 00 82-56	0300090401	11503	Screw thermodur 4x12 torx	Vis thermodur 4x12 torx			