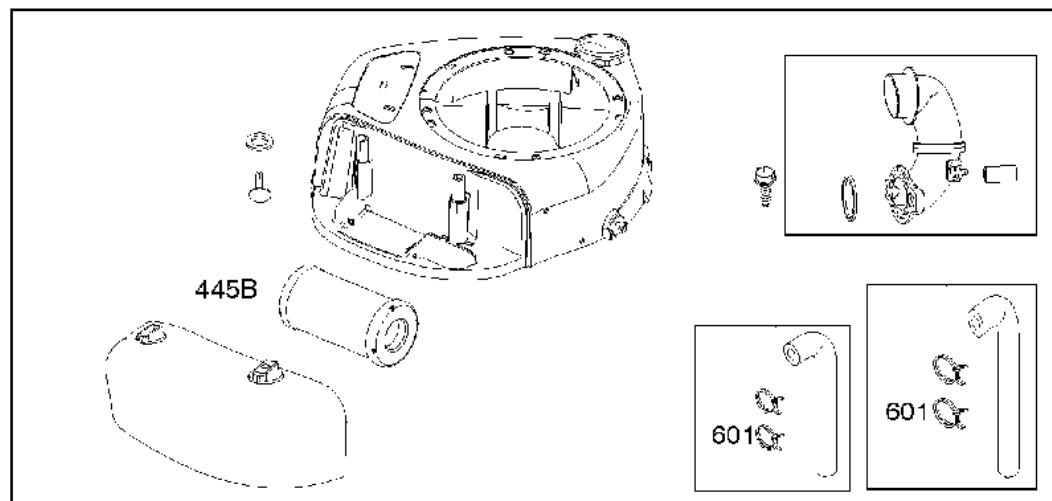
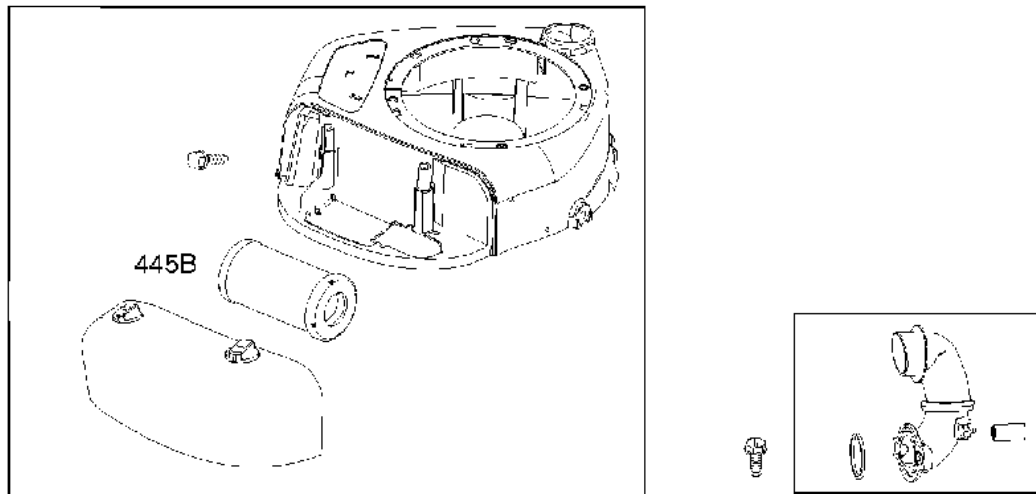
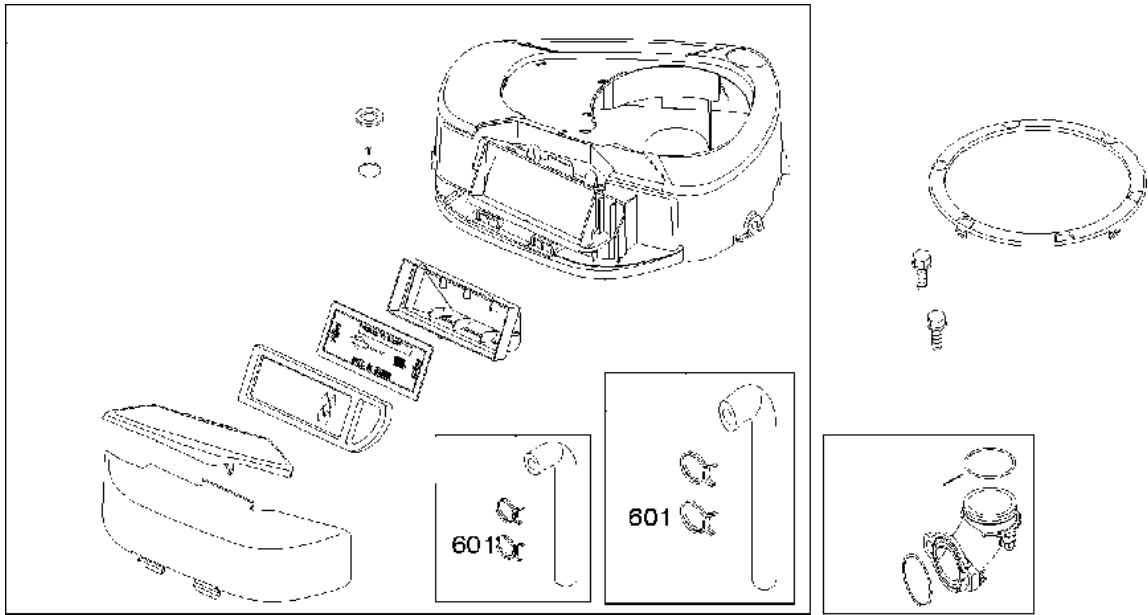




SPARE PARTS LIST

ENGINES & TRANSMISSIONS

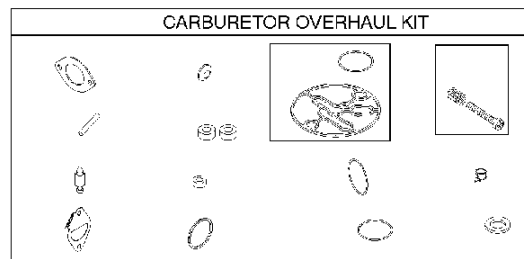
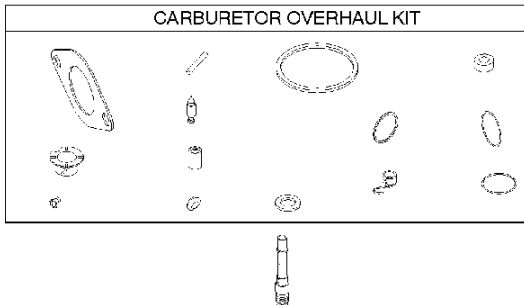
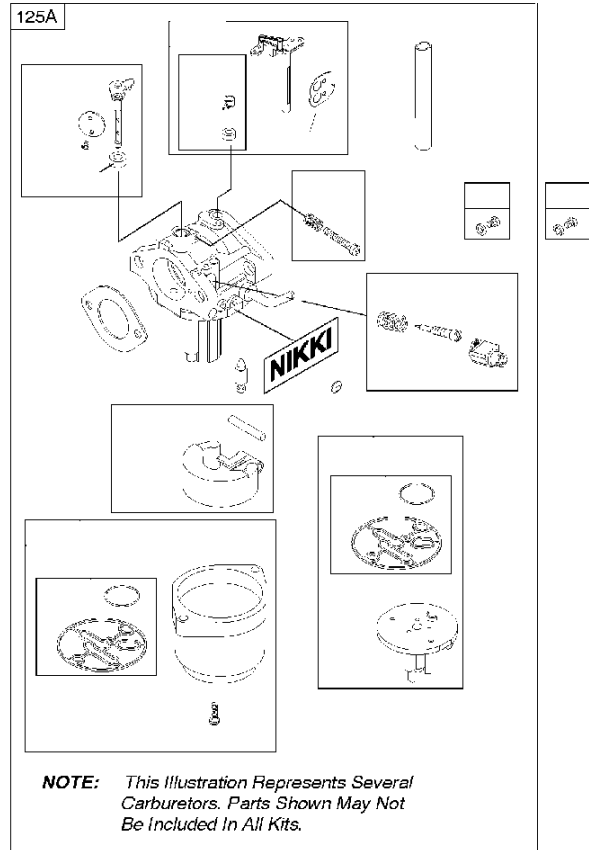
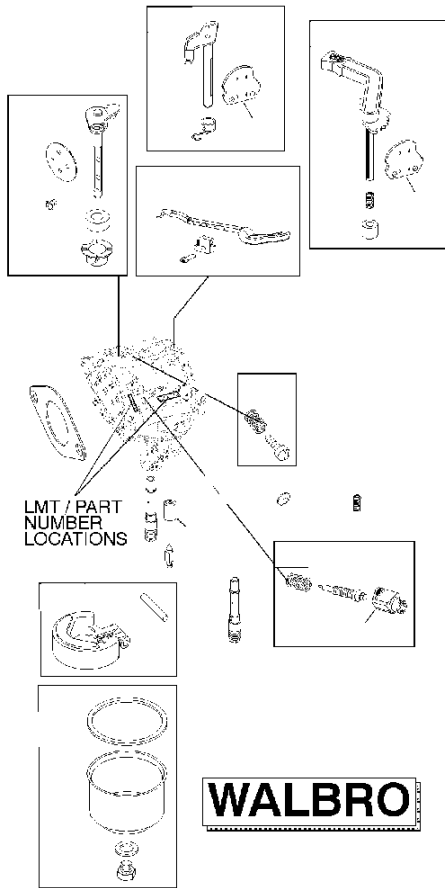
BRIGGS & STRATTON ENGINES,
2198073210B1, 2017-01



Air filter

BRIGGS & STRATTON ENGINES, 2198073210B1, 2017-01

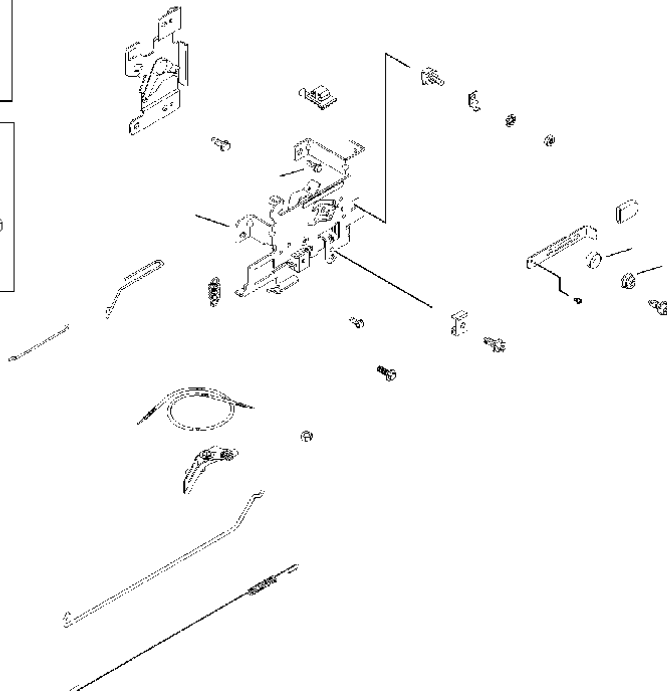
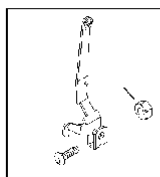
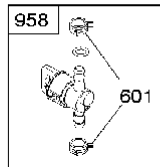
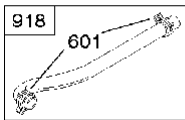
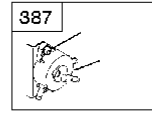
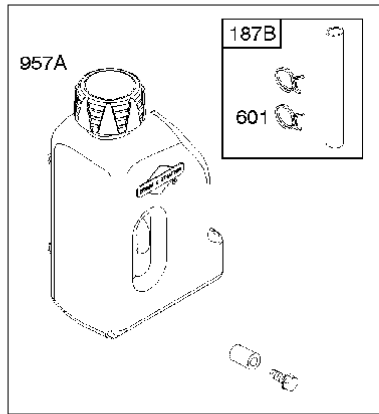
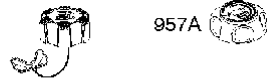
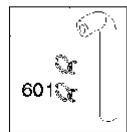
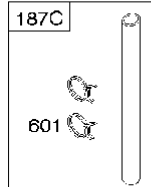
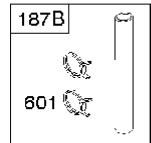
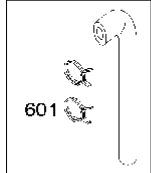
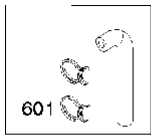
Ref	Part No	Description	Remark	QTY KIT
445B	586 61 71-01	AIR FILTER	591583	1
601	582 28 77-32	CLAMP	791850	1



Carburetor

BRIGGS & STRATTON ENGINES, 2198073210B1, 2017-01

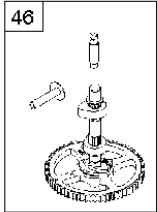
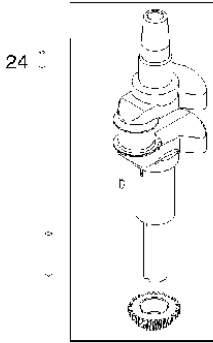
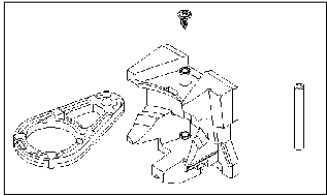
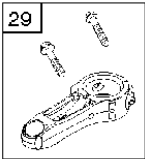
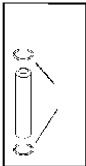
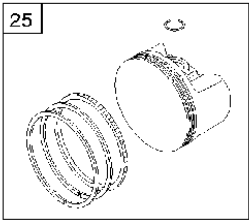
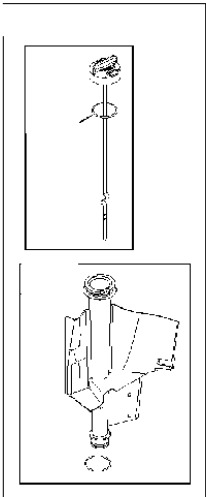
Ref	Part No	Description	Remark	QTY KIT
125A	585 24 31-01	CARBURETTOR	590399	1



Controls

BRIGGS & STRATTON ENGINES, 2198073210B1, 2017-01

Ref	Part No	Description	Remark	QTY KIT
187B	576 92 09-01	FUEL HOSE	791766	1
187C	589 66 98-68	FUEL HOSE	791745	1
240	582 28 83-63	FUEL FILTER	394358S	1
387	525 26 47-01	FUEL PUMP BODY	697090	1
387A	585 40 14-01	FUEL PUMP	808656	1
601	582 28 77-32	CLAMP	791850	1
918	582 28 88-90	HOSE ASSY	791851	1
957A	585 24 21-01	FUEL TANK	795027	1
958	584 95 81-01	VALVE	698183	1
N/A	589 66 98-03	FUEL FILTER	Workshop package, 4112	5



Crankshaft

BRIGGS & STRATTON ENGINES, 2198073210B1, 2017-01

Ref	Part No	Description	Remark	QTY KIT
24	501 58 56-01	KEY	591757	1
24	582 28 90-92	WOODRUFF KEY	796335	1
25	585 24 35-01	PISTON	792307	1
29	585 24 36-01	CONNECTING ROD	791633	1
46	585 24 43-01	CAMSHAFT	793880	1

WARNING LABEL




REQUIRED when replacing parts with warning labels affixed.

WARNING LABEL

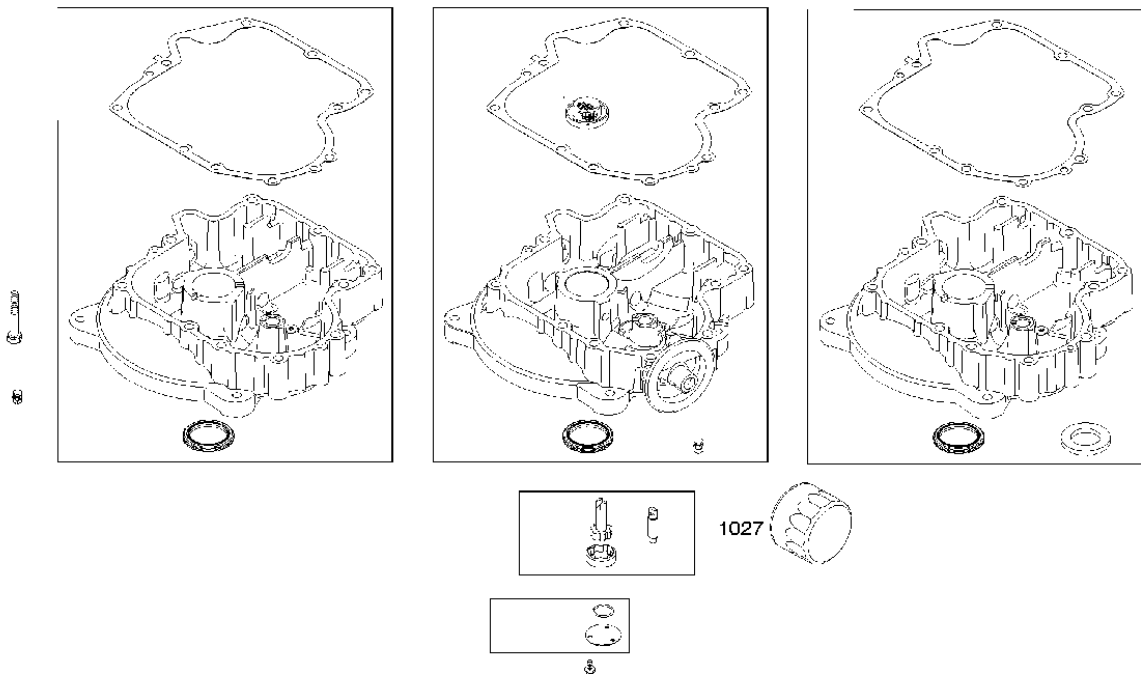
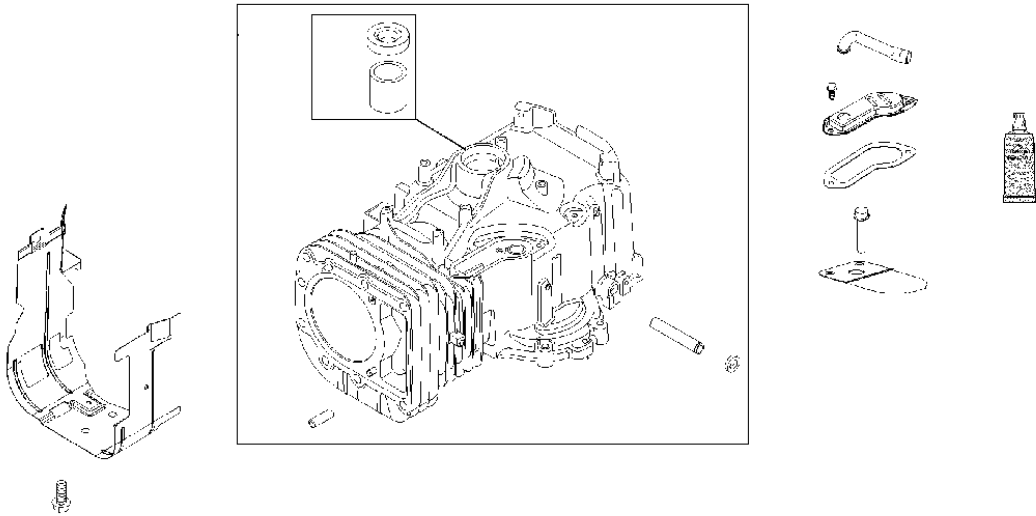


REQUIRED when replacing parts with warning labels affixed.

OPERATOR'S MANUAL



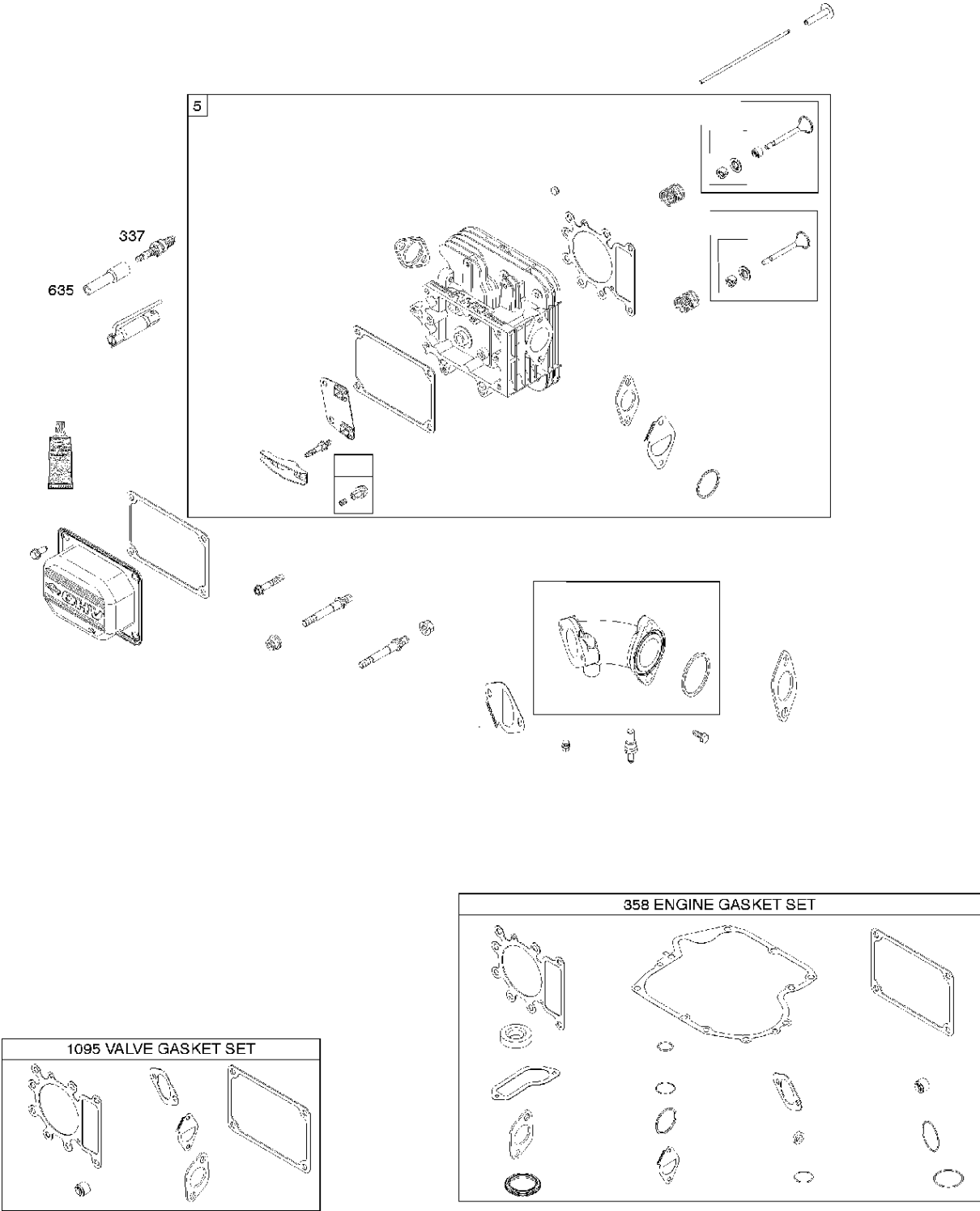
EMISSIONS LABEL



Cylinder

BRIGGS & STRATTON ENGINES, 2198073210B1, 2017-01

Ref	Part No	Description	Remark	QTY KIT
1027	586 45 88-01	OIL FILTER	492932S	1



Cylinder cover

BRIGGS & STRATTON ENGINES, 2198073210B1, 2017-01

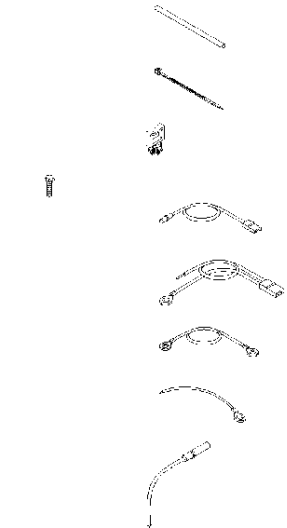
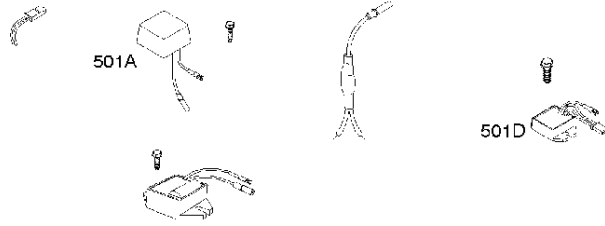
Ref	Part No	Description	Remark	QTY KIT
5	585 24 34-01	CYLINDER HEAD	796183	1
337	582 31 23-69	SPARK PLUG CAP	691043	1
358	585 24 29-01	GASKET KIT	796181	1
635	585 24 25-01	SPARK PLUG CAP	691909	1
1095	585 24 28-01	GASKET KIT	796189	1

Muffler

BRIGGS & STRATTON ENGINES, 2198073210B1, 2017-01

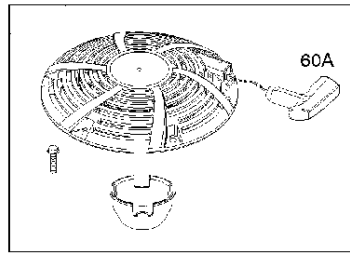
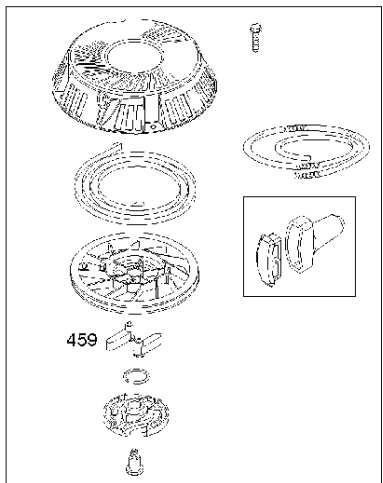
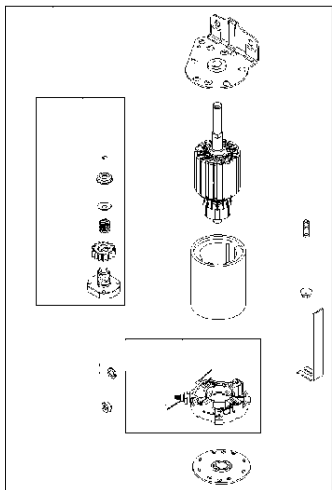
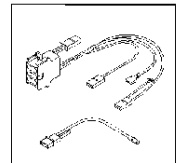
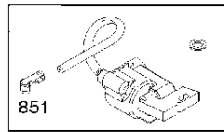
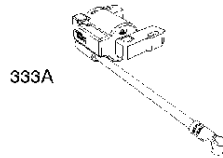
Ref	Part No	Description	Remark	QTY KIT
24	582 28 90-92	WOODRUFF KEY	796335	1
24	501 58 56-01	KEY	591757	1

DC ONLY	DUAL CIRCUIT	5/9 AMP	TRI CIRCUIT	10/16 AMP
	474B 			



NOTE: All stators use a No. 1119 mounting screw.

NOTE: The proper flywheel part number and/or the alternator magnet size will determine the alternator type or output. See repair instruction manual for additional information.



Starter

BRIGGS & STRATTON ENGINES, 2198073210B1, 2017-01

Ref	Part No	Description	Remark	QTY KIT
60A	585 39 07-01	HANDLE	281434S	1
333A	585 25 82-01	ARMATURE	592841	1
459	582 31 05-24	GRIPPER	281505S	1
474B	582 28 72-39	GENERATOR	592831	1
501A	585 61 94-01	REGULATOR	794360	1
501D	582 31 13-62	REGULATOR	845907	1
851	585 24 24-01	SPARK PLUG CAP	692424	1